



# TECNOMETAL

Handcraft Workings

I design,  
build and  
develop.

over  
25 years  
of artisan  
passion.

Carlo Minio - Owner



**TECNOMETAL** - Handcraft Workings  
contrada Zacco Micciò 96019 Rosolini, SR - Italy

+39 340 8376813  
[info@carlominio.it](mailto:info@carlominio.it)

[www.carlominio.it](http://www.carlominio.it)

In **my workshop** I design, build and develop.  
The most recent technologies meet over **25 years of artisan passion.**



## INSPIRED BY DESIGN

Aesthetics and quality are at the center of all my work.  
My workings are furnishing accessories:  
they complete and enrich the beauty that your house will have.

## ARTISAN PRODUCTION

In order to guarantee the integrity and durability of the products, I keep all the production processing handcrafted. After the machines make rough cuts to the profiles, each element is polished and finished by hand to achieve the perfection in every detail.

## MADE WITH PASSION

High quality craftsmanship goods, style and functionality.  
All made using processing methods that have nothing industrial.  
The result? Customized products, made to last over time. Made to enrich.



I create  
artifacts  
to reflect  
your good taste.

Creating is the spirit from which Tecno Metal was born.  
An artisan workshop, in love with its work, obsessed with quality.  
Nothing is left to chance: I carry out every order with care and passion.





Artistic railings





## Artistic railings

In Wrought Iron: classic typology with artistic finishes ones depending on the architectural context.

### ORIGINS

Designed by the technical designer.  
Designed, built and finished  
by Tecno Metal - Carlo Minio.

### MATERIALS & FINISHES

Iron. Finishes of the surface of the steps consisting of natural pigments with zero environmental impact.  
Walnut essence.

#### Details

Gold leaf on ligatures.

#### Artistic painting

Opaque copper effect.

### AESTHETIC LINES

Helical design. Contoured in site with appropriate equipment.

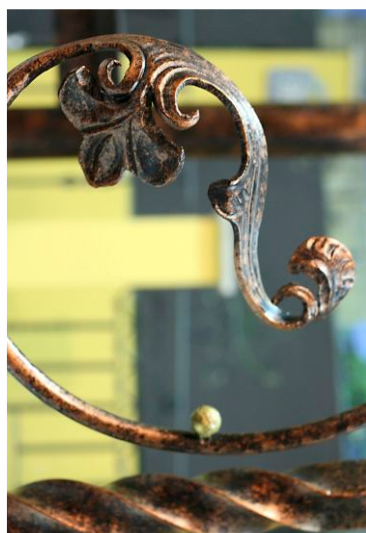
### PERFORMANCES

The parapet with an applied static load of 80 Kg/m has not been subject to permanent breakage or deformation.

### CONSIDERATIONS

All Tecno Metal products have a suitability certificate as they are related to the static tests for each product used in the implementation phases. Ours are special and niche products, intended for a select and demanding clientele, therefore all the process, from construction to installation, is executed in a careful and accurate way by the owner himself, thus ensuring greater functionality and greater product warranty.





## Artistic railings

In Wrought Iron: classic typology with artistic finishes ones depending on the architectural context.

### ORIGINS

Designed by the technical designer.  
Designed, built and finished  
by Tecno Metal - Carlo Minio.

### MATERIALS & FINISHES

Iron. Finishes of the surface of the steps consisting of natural pigments with zero environmental impact.  
Walnut essence.

#### Details

Gold leaf on ligatures.

#### Artistic painting

Opaque copper effect.

### AESTHETIC LINES

Shaped arched design on site  
with appropriate equipment.

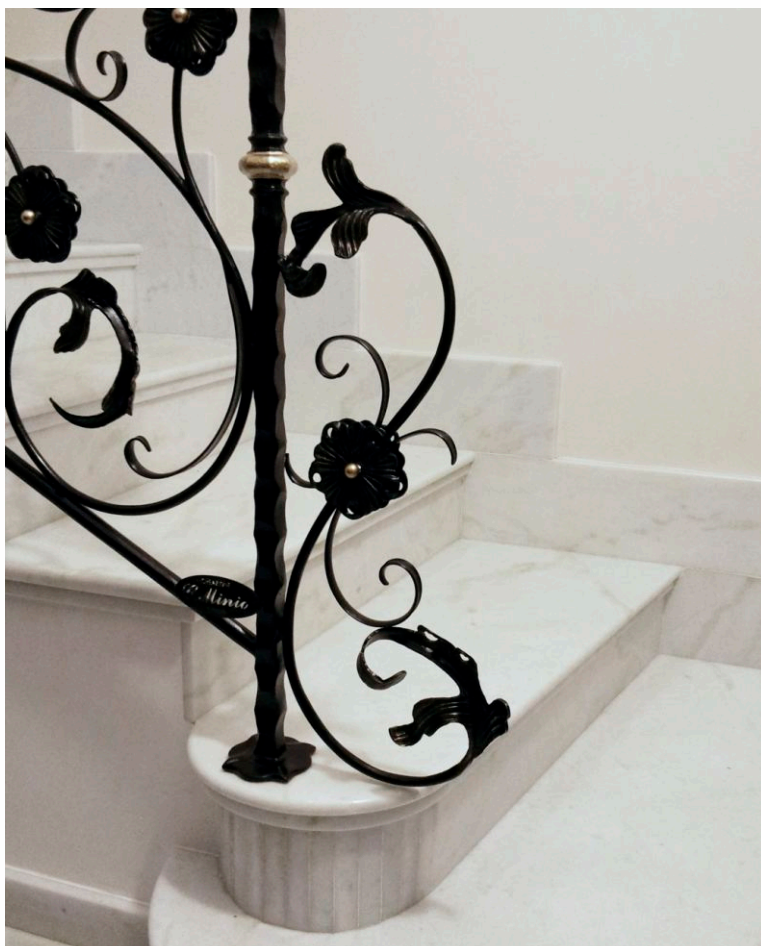
### PERFORMANCES

The parapet with an applied static load of 80 Kg/m has not been subject to permanent breakage or deformation.

### CONSIDERATIONS

All Tecno Metal products have a suitability certificate as they are related to the static tests for each product used in the implementation phases. Ours are special and niche products, intended for a select and demanding clientele, therefore all the process, from construction to installation, is executed in a careful and accurate way by the owner himself, thus ensuring greater functionality and greater product warranty.





## Artistic railings

In Wrought Iron: classic typology with artistic finishes ones depending on the architectural context.

### ORIGINS

Designed, built and finished by Tecno Metal - Carlo Minio.

### MATERIALS & FINISHES

Iron.

**Details**  
Gold paint.

**Powder painting**  
Opaque black.

### AESTHETIC LINES

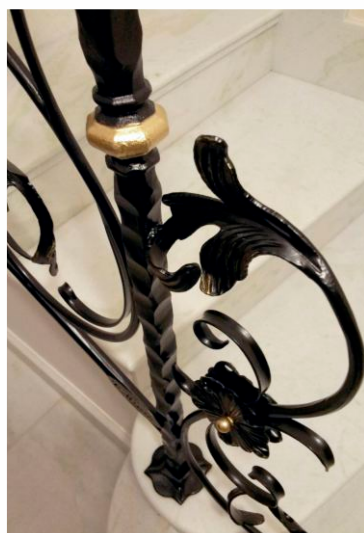
Baroque style straight design.

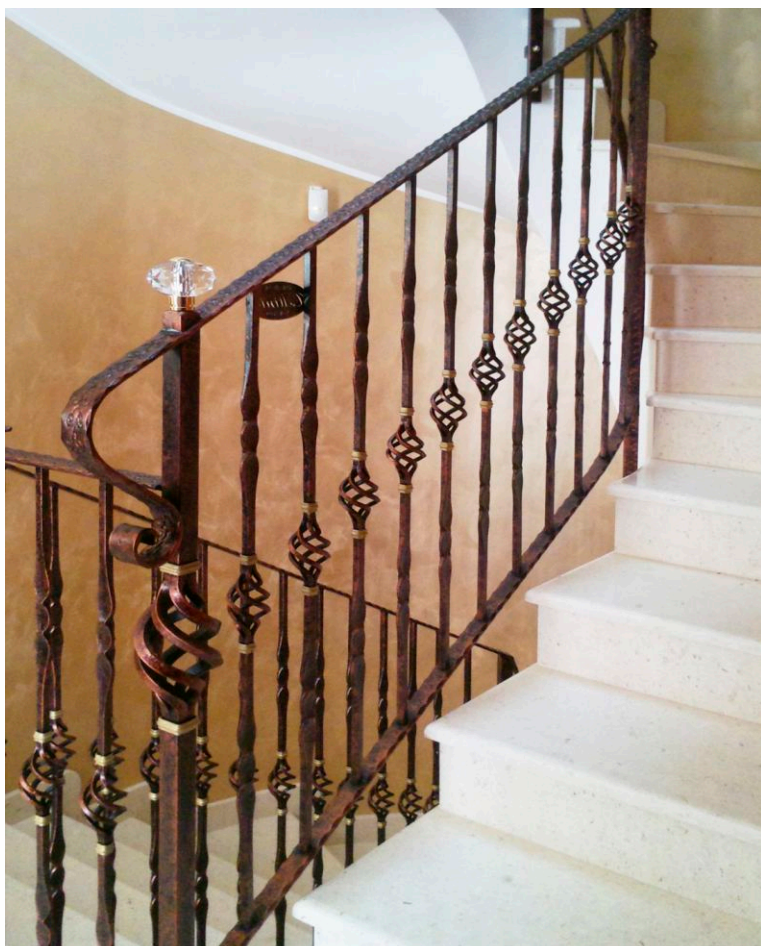
### PERFORMANCES

The parapet with an applied static load of 80 Kg/m has not been subject to permanent breakage or deformation.

### CONSIDERATIONS

All Tecno Metal products have a suitability certificate as they are related to the static tests for each product used in the implementation phases. Ours are special and niche products, intended for a select and demanding clientele, therefore all the process, from construction to installation, is executed in a careful and accurate way by the owner himself, thus ensuring greater functionality and greater product warranty.





## Artistic railings

In Wrought Iron: classic typology with artistic finishes ones depending on the architectural context.

### ORIGINS

Designed, built and finished by Tecno Metal - Carlo Minio.

### MATERIALS & FINISHES

Iron. Surface finishes consisting of natural pigments with zero environmental impact.

#### Accessories/Details

Original Swarovski.  
Gold paint on ligatures.

#### Artistic painting

Glossy copper effect.

### AESTHETIC LINES

Straight design with contoured parts on site with appropriate equipment.

### PERFORMANCES

The parapet with an applied static load of 80 Kg/m has not been subject to permanent breakage or deformation.

### CONSIDERATIONS

All Tecno Metal products have a suitability certificate as they are related to the static tests for each product used in the implementation phases. Ours are special and niche products, intended for a select and demanding clientele, therefore all the process, from construction to installation, is executed in a careful and accurate way by the owner himself, thus ensuring greater functionality and greater product warranty.







My environment lives  
of the flavors of traditional craftsmanship.  
A small and highly qualified environment,  
where heart, mind and hands get married  
together with Steel, Iron, Glass, Hanex, Pvc, Aluminum.  
The result is something that satisfies the eyes and the soul.  
A small workshop, for great products.

*Carlo Minio*